



Kelly Foulk <kelly@argonav.io>

---

## Your Shorelines Just Got Sharper

1 message

---

**Captain Jeff** <jeff@m.argonav.io>  
Reply-To: jeff@argonav.io  
To: kelly@argonav.io

Sat, Apr 4, 2026 at 12:00 AM



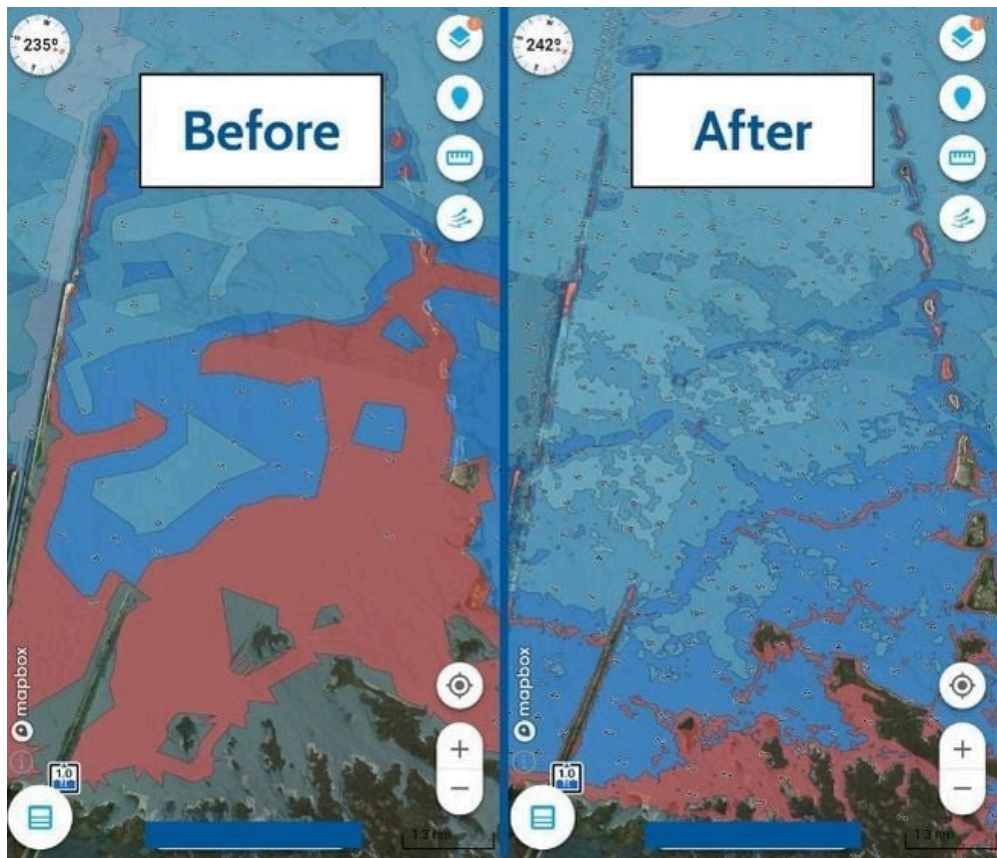
Here's what we've got for you this week:

- **What's New:** Your Shorelines Just Got Sharper
- **What Else is New:** RNC Charts Within Argo
- **Next Argo Live:** Meet Nomadic Cruiser Sean Welsh
- **Quick Tip:** Your Reviews Work for You Too

---

### What's New this Week

## Your Shorelines Just Got Sharper



Argo's charts just got a significant upgrade. If you spend any time navigating coastal or inland waters, you'll notice the difference right away. Water coverage is now cleaner and more precisely aligned with the shoreline, giving you a more accurate picture of what's actually around you. Depth data has also been expanded, meaning better chart detail and more reliable routing suggestions wherever you cruise.

One of the biggest wins in this update is the coverage of previously unmapped areas. Thanks to the latest hydrographic surveys, much of the coast that once had gaps is now filled in, creating a seamless navigation experience from start to finish.

What makes this possible? Argo pulls from the latest hydrographic surveys and trusted sources like NOAA, the U.S. Army Corps of Engineers, and local agencies — so your charts always reflect real, up-to-date conditions.

[Explore in the App](#)

---

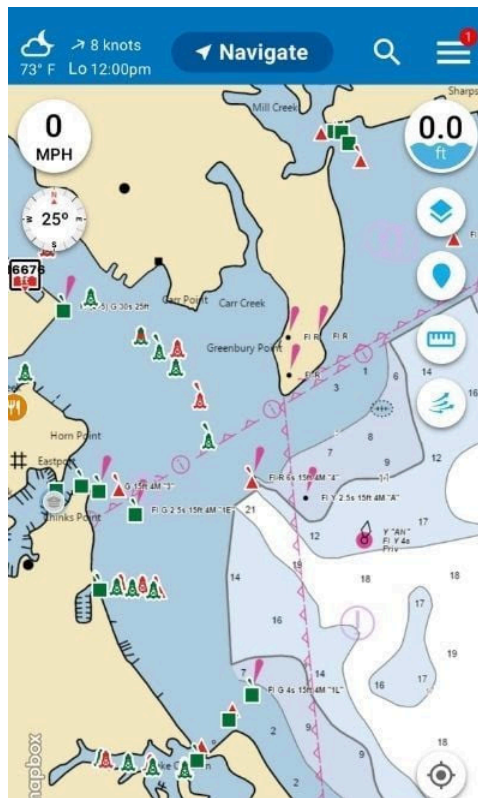
### What Else Is New?

## RNC Charts Within Argo

For those who missed raster charts, this brings back the familiar look of traditional paper charts, with everything visible at a glance and no surprises as you zoom. Many boaters find them quicker to read and easier to trust when it matters most.

Now, with updated RNCs from NOAA built on ENC data, you can get that same clarity with modern accuracy, right inside Argo.

Turn on NOAA RNC Charts by going to **Map Options** (available on mobile only).



Explore in the App

Next Argo Live: Thursday, April 9th at 7 PM ET

## Meet Nomadic Cruiser Sean Welsh

Sean has seen it all from the deck of his 52-foot steel trawler, *Vector*.

Watch via Facebook

We'll be chatting about the current state of cruising and how you can use tools like Argo to navigate coastal waters like a pro.

Watch via Youtube

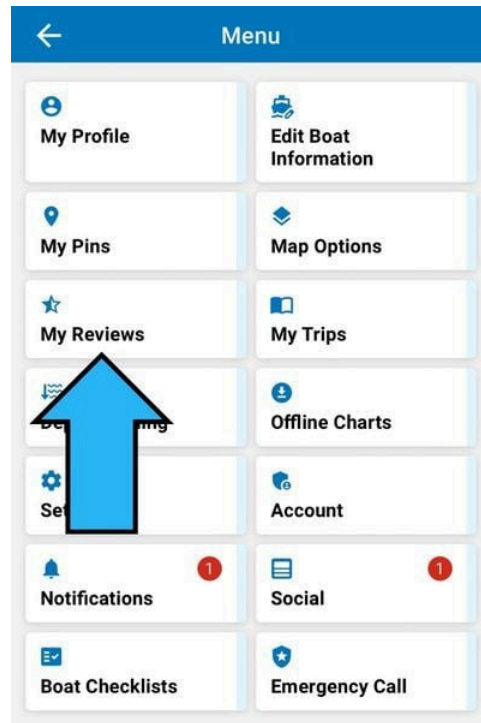
### Quick Tip

## Your Reviews Work for You Too

Did you know your Argo reviews are just as useful for you as they are for other boaters?

Trying to remember that amazing sandwich spot from your last trip to Charleston — or want to avoid a marina you weren't thrilled with? Just check your reviews.

To view and update your past reviews, head to **Settings** → **My Reviews**.



### BOAT BETTER TOGETHER

Argo is an easy-to-use navigation & boating app.

[Support](#)

[Unsubscribe](#)