



Kelly Foulk <kelly@argonav.io>

---

## See Rain and Lightning on Your Chart

1 message

---

**Captain Jeff** <jeff@m.argonav.io>

Mon, Apr 20, 2026 at 2:47 PM

Reply-To: jeff@argonav.io

To: kelly@argonav.io



Here's what we've got for you this week:

- **What's New:** See Rain and Lightning on Your Chart
- **On the Blog:** Our Team's Favorite Waterfront Restaurants in Maryland
- **Community Spotlight:** Find a Cleanup Near You This Earth Day
- **Quick Tip:** Be Smart About Where You Anchor

---

### What's New this Week

## See Rain and Lightning on Your Chart

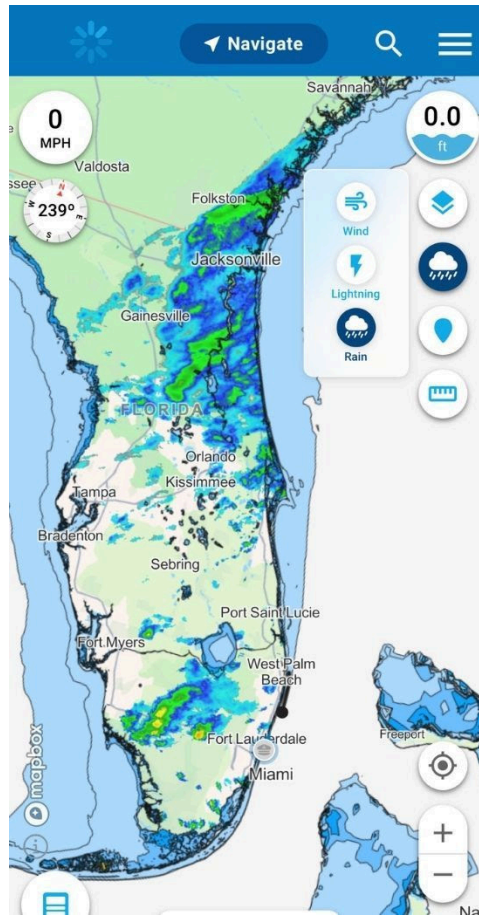
You can now see rain and lightning directly on the chart, with short forecasts that show how systems are moving. It's a quick way to spot trouble before it gets to you.

Wind got an upgrade too. You can now look up to 72 hours ahead to see what's building.

There's one more feature in there we think you'll like, check it out around 1:09 in the video below.

This is the kind of stuff to check before you leave and keep an eye on while you're out.

[Watch the Demo Video](#)



### On the Blog

## Our Team's Favorite Waterfront Restaurants in Maryland



Maryland's waterfront restaurant scene is one of the best in the country. From laid-back crab shacks to lively beach bars to more

elevated riverfront dining, there is something for every kind of day on the water.

We asked our team to share their favorite spots. These are the places we keep going back to.

[Read More](#)

---

### Community Spotlight

## Find a Cleanup Near You This Earth Day

Cleanups are happening all over the country, from beaches and shorelines to rivers, parks, and neighborhoods. They're easy to join and already organized by local groups in your area.

Use the map to find one nearby and jump in. It's a simple way to get outside, help out, and be part of something positive in your community.



[Find a Cleanup](#)

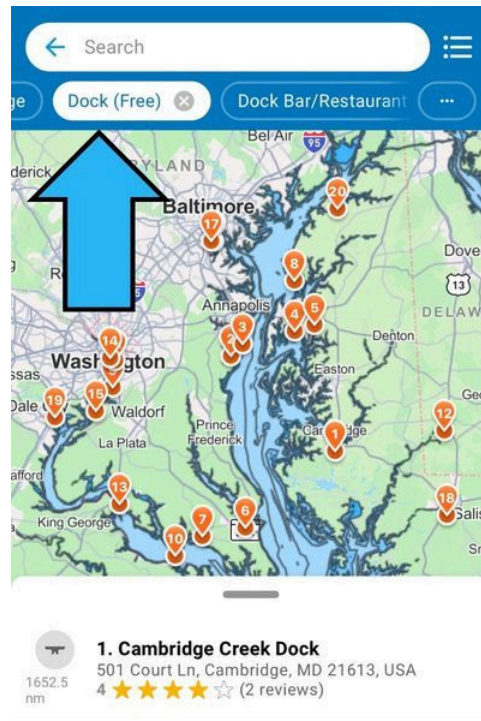
---

### Quick Tip

## Be Smart About Where You Anchor

Anchoring in the wrong spot can damage sensitive habitats like seagrass beds, which sometimes take years to recover and play a big role in water quality and marine life.

In areas with sensitive habitats, consider grabbing a mooring or dock instead. Just use Search by Category in the app to find options nearby and help protect the places you love to boat.



## BOAT BETTER TOGETHER

Argo is an easy-to-use navigation & boating app.

[Support](#)

[Unsubscribe](#)