



Kelly Foulk <kelly@argonav.io>

Route Safety Alerts Catch Issues Before You Depart

1 message

Captain Jeff <jeff@m.argonav.io>
Reply-To: jeff@argonav.io
To: kelly@argonav.io

Thu, Feb 12, 2026 at 9:40 AM

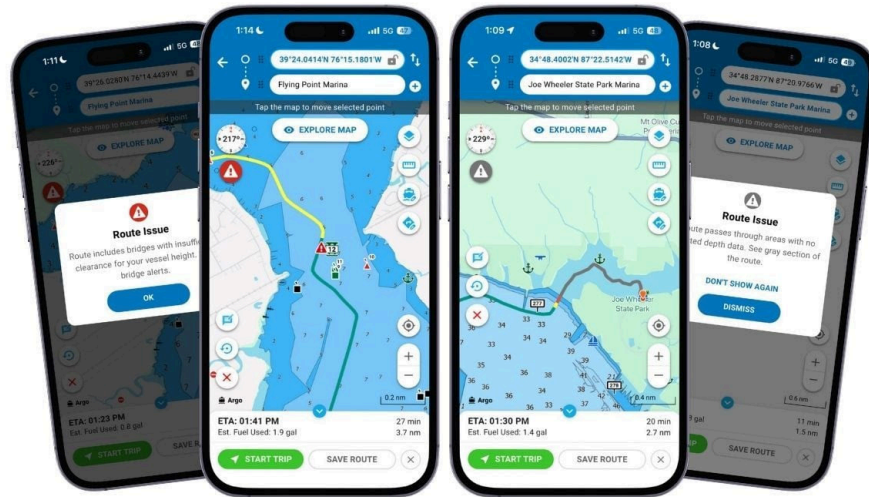


Here's what we've got for you this week:

- **What's New:** Route Safety Alerts Catch Issues Before You Depart
- **What's New #2:** Canadian Tide and Current Stations
- **On the Blog:** How Navigation Apps Actually Work and Why "Always Allow" Location Access Is Required
- **Quick Tip:** Improve Your Route Accuracy
- **Argo Live:** Link to Join February 12 @7pm ET
- **Sneak Peak:** Argo 3.0 Weather Radar Video

What's New this Week





Route Safety Alerts Catch Issues Before You Depart



No more surprises on the water! We've heard your stories about discovering bridge clearance issues or shallow depths mid-route when it's too late to easily turn back.

That stops now.

Introducing intelligent route warnings that catch potential problems *before* you cast off. Our new alert system will flag four critical issues the moment you plot your course:

-  **Shallow water ahead?** If your route cuts through areas shallower than your draft, you'll see it highlighted in red—with a clear warning modal.
-  **Uncharted territory?** Gray sections now indicate portions of your route passing through areas with no depth data, so you can decide whether to proceed or reroute.
-  **Bridge too low?** Planning to pass under a bridge that won't clear your vessel height? You'll get an instant alert with the exact location marked.
-  **Missing bridge data?** We'll also warn you about bridges along your route that lack clearance information, so you can research them before departure.

The best part? After seeing the alert once, you can select "Don't Show Again" and a convenient warning icon will appear instead to keep you informed without interrupting your workflow.

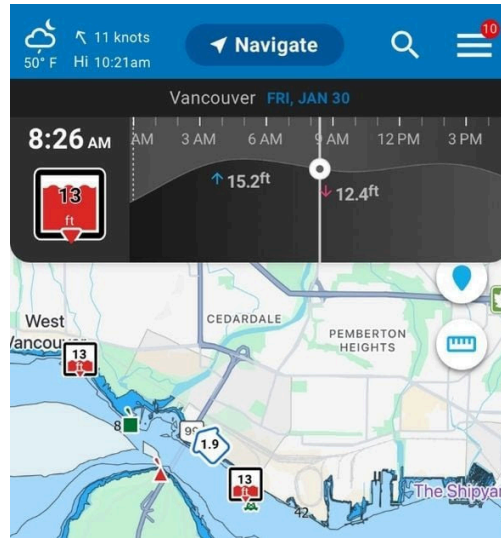
What's New #2?

Canadian Tide and Current Stations

Tide & current stations are now live in Canadian waters!

Get the same interactive chart data you love in the US, now covering Canada (mostly in the Pacific Northwest). Explore with a 14-day free Premium trial.

Start Free Trial



On the Blog

How Navigation Apps Actually Work

And Why “Always Allow” Location Access Is Required



Navigation apps can feel deceptively simple. You open the app, your boat icon appears on the chart, and off you go. Under the hood, navigation is anything but simple. It’s a continuous process that depends on motion, time, and context—not just a single location reading.

Read on to learn what Argo and other navigation apps use your "Always Allow" location for.

[Read More](#)

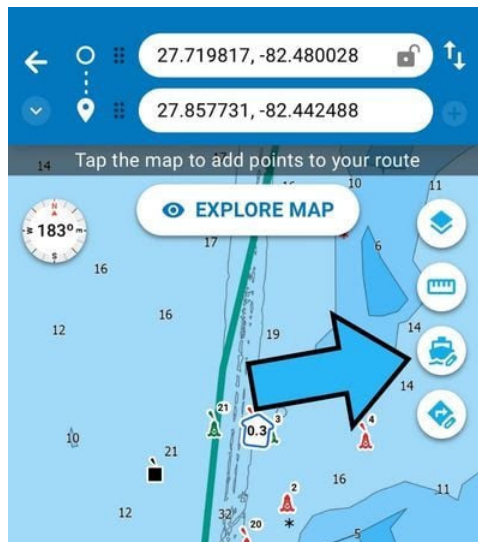
Quick Tip

Improve Your Route Accuracy

Want routes tailored perfectly to YOUR boat? Add your vessel details (draft, height, speed, and fuel capacity) for smarter routing.

Calculate accurate trip times, fuel usage and let Autoroute create safer more accurate routes.

Hit the boat icon on the left sidebar while creating a route to update. Save for just that route or every route after.



Next Argo Live

Join us LIVE on Feb 12 @7PM ET

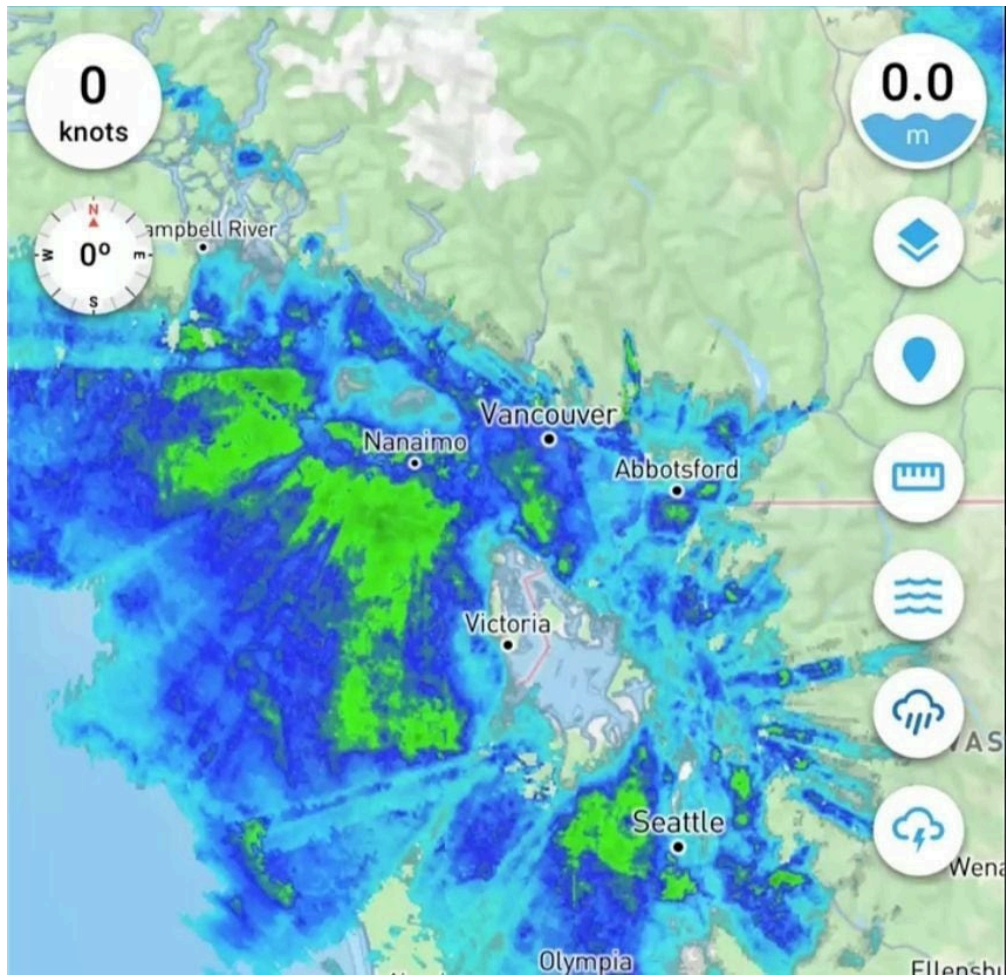
Something big is happening at Argo. Join us for major updates, product news, feature demos, and a special guest. You won't want to miss what's coming next.

[Join via Facebook](#)

[Join via Youtube](#)

Sneak Peek

Argo 3.0 Weather Radar Video



Watch the Weather Radar Video

BOAT BETTER TOGETHER

Argo is an easy-to-use navigation & boating app.

Support

Unsubscribe